



Crystal City Potomac Yard Bus Transitway Project

Public Meeting
March 2011

Agenda

- Project Purpose and Background
- Status Update
- Station Design in Crystal City
- Community and User Input
- Next Steps



Project Purpose

- Provide high-capacity and high-quality bus transit service
- Support new transit oriented development in Potomac Yard in Arlington and Alexandria
- Extend the reach of the Metrorail system
- Support redevelopment in Crystal City
- Set the stage for streetcar



Project Background

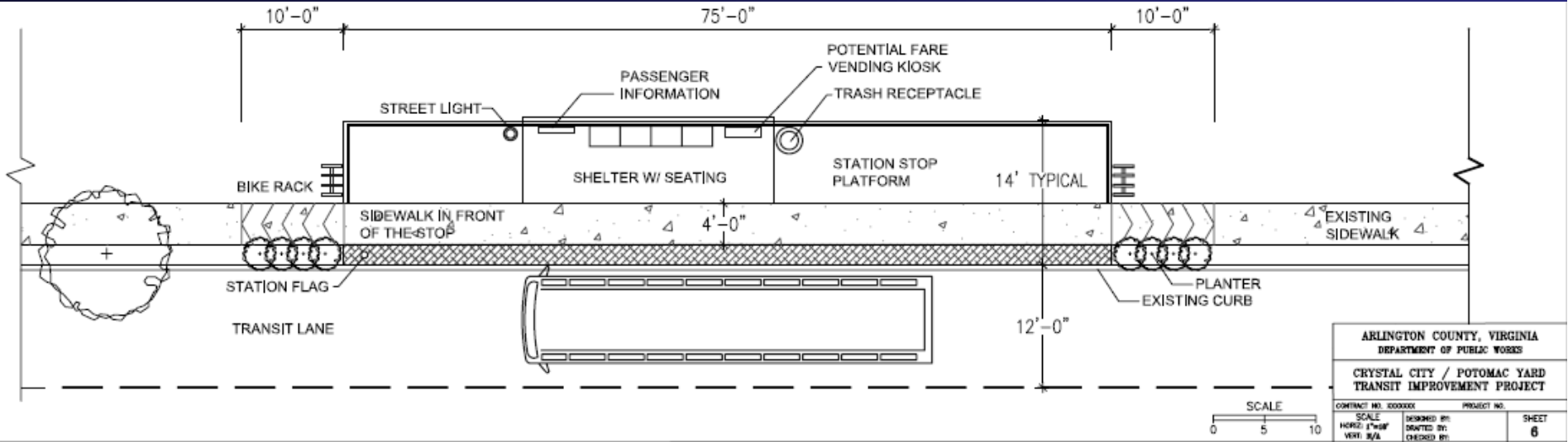
- Transit alternatives analysis (2003)
- Interim improvements strategy (2005)
- Environmental document (2007)
- Crystal City Sector Plan (2010)
- Environmental document update (2010)

Project Context

- Crystal City Sector Plan
- Transitway
- Two-way of Crystal Drive
- Planned two-way of Clark/Bell
- Route 1 Corridor Streetcar
- Coordination with City of Alexandria



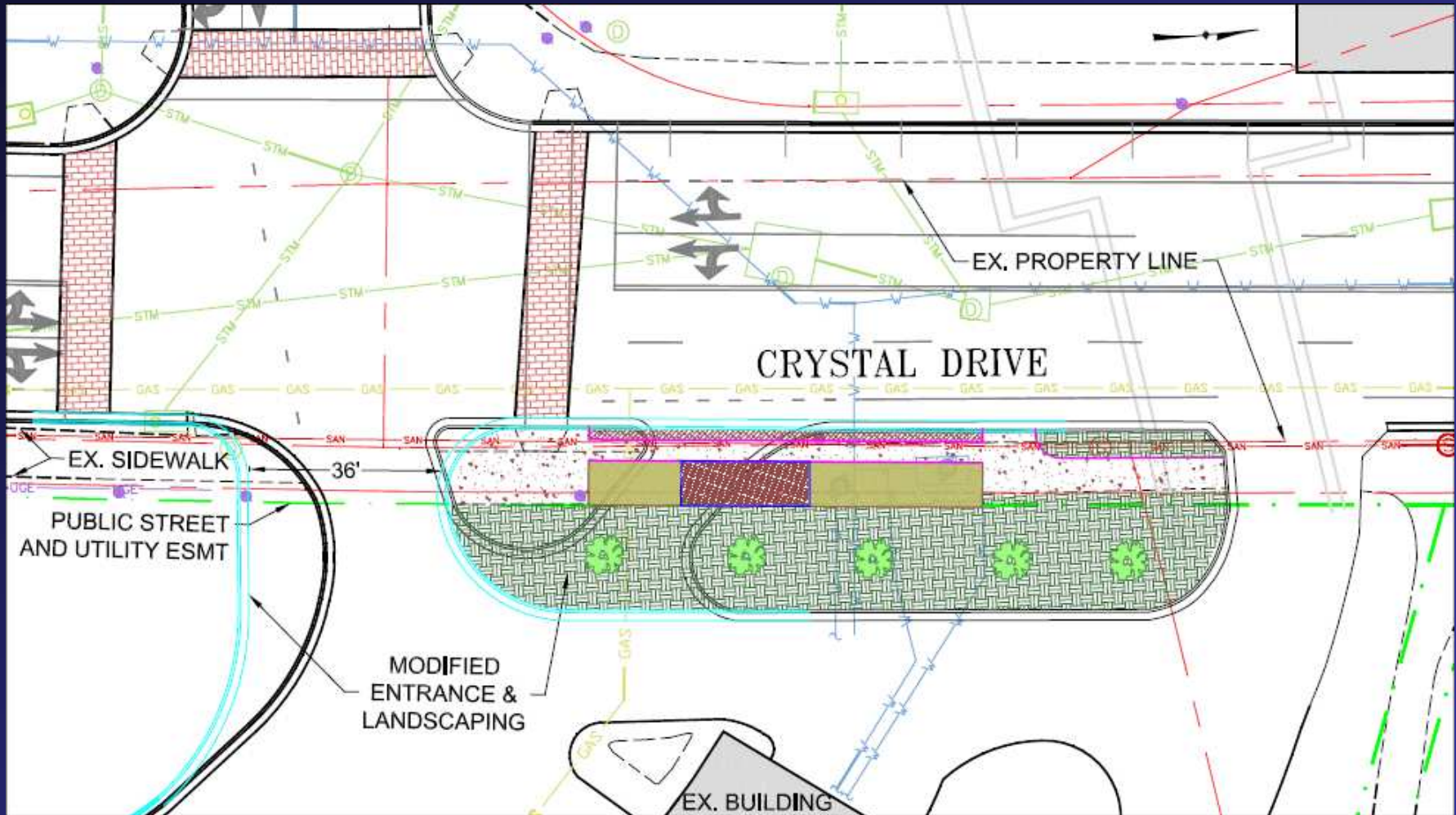
Typical Station Plan



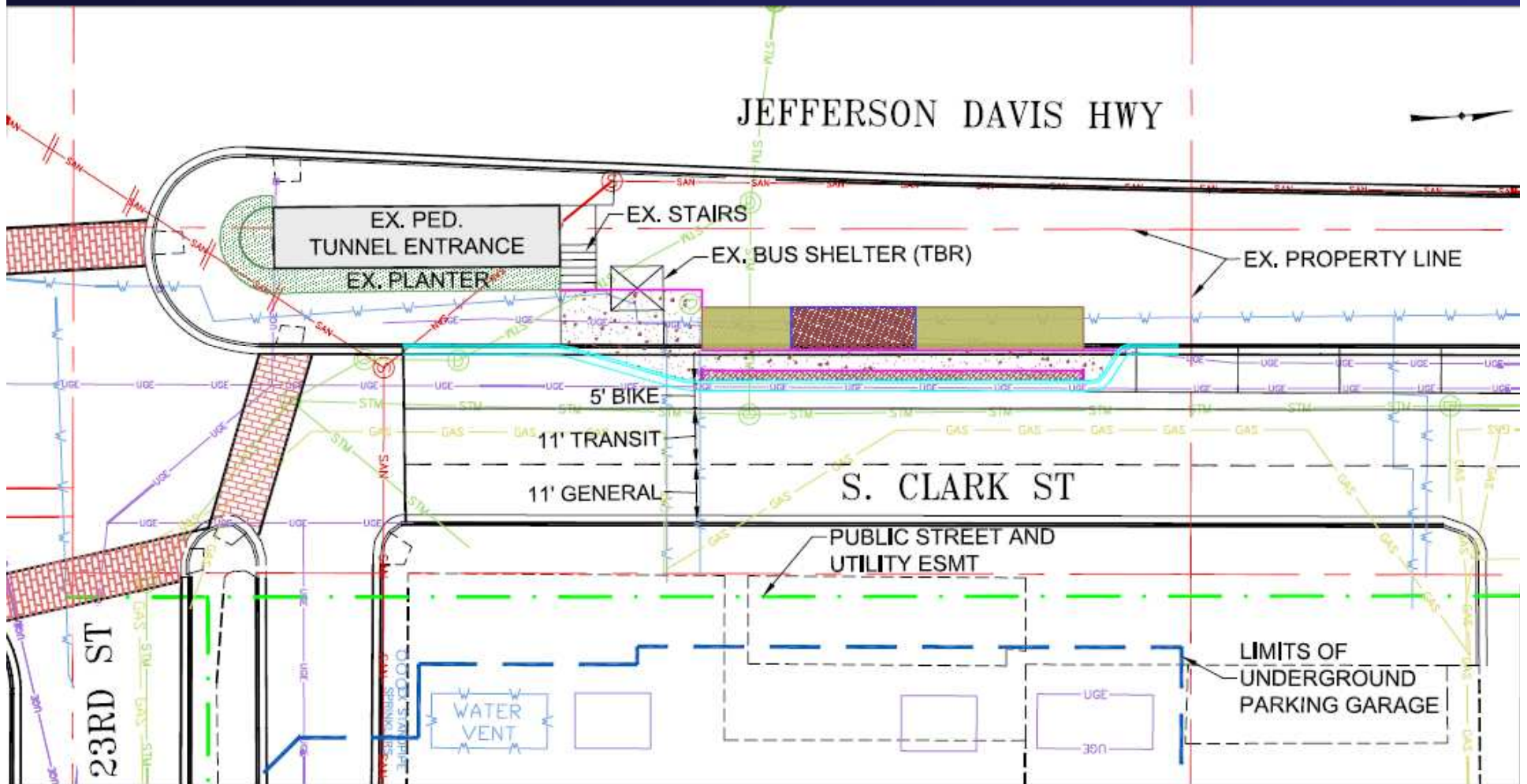
Typical Station Plan

- 75' platform length with 25' long covered shelter
- ADA accessible
- 10" high curb for easier vehicle boarding
- Seating, bike parking, electronic signage, waste & recycling receptacles
- Future fare payment machines
- Construction to include sustainable materials and methods

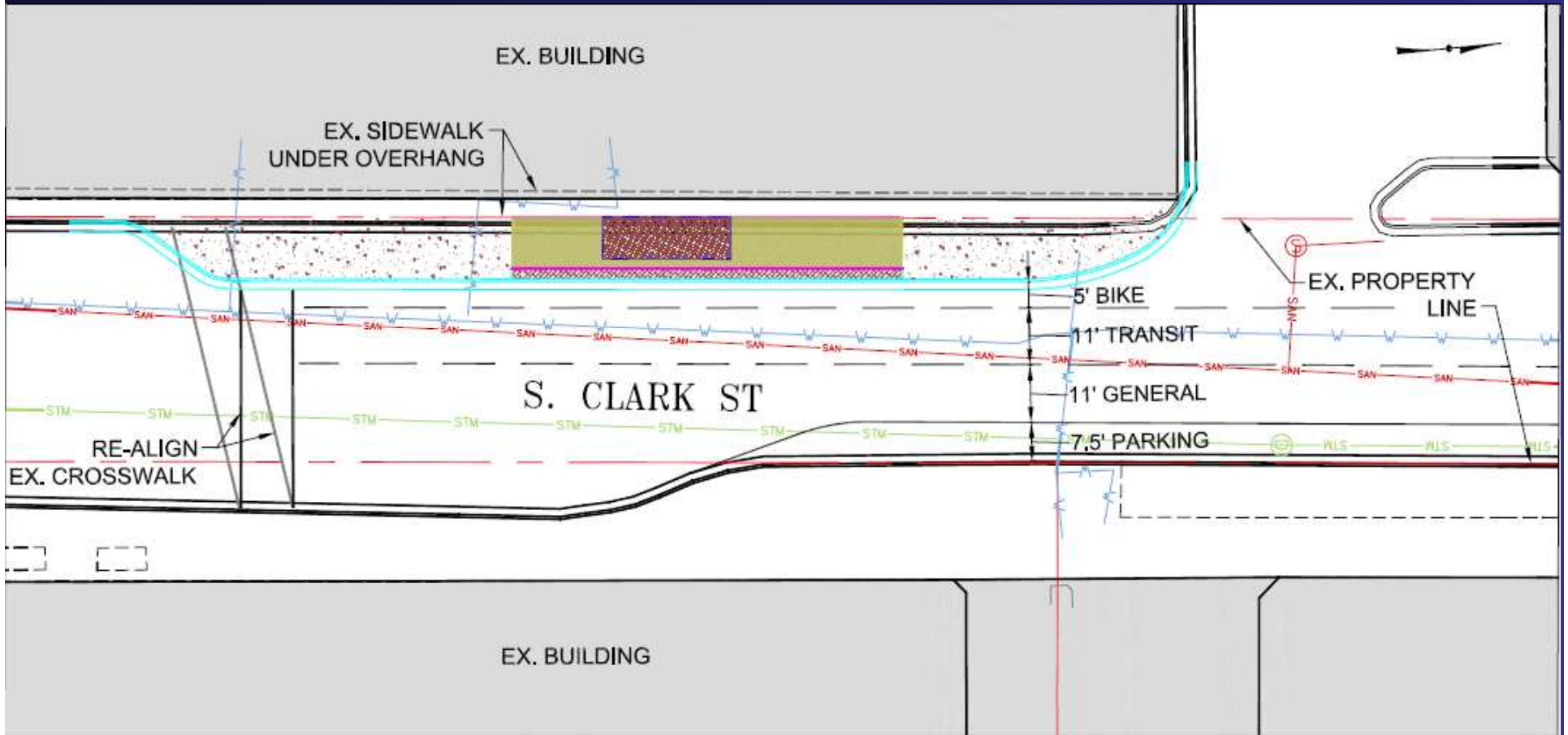
Station Location: 18th/Crystal



Station Location: 23rd/Clark



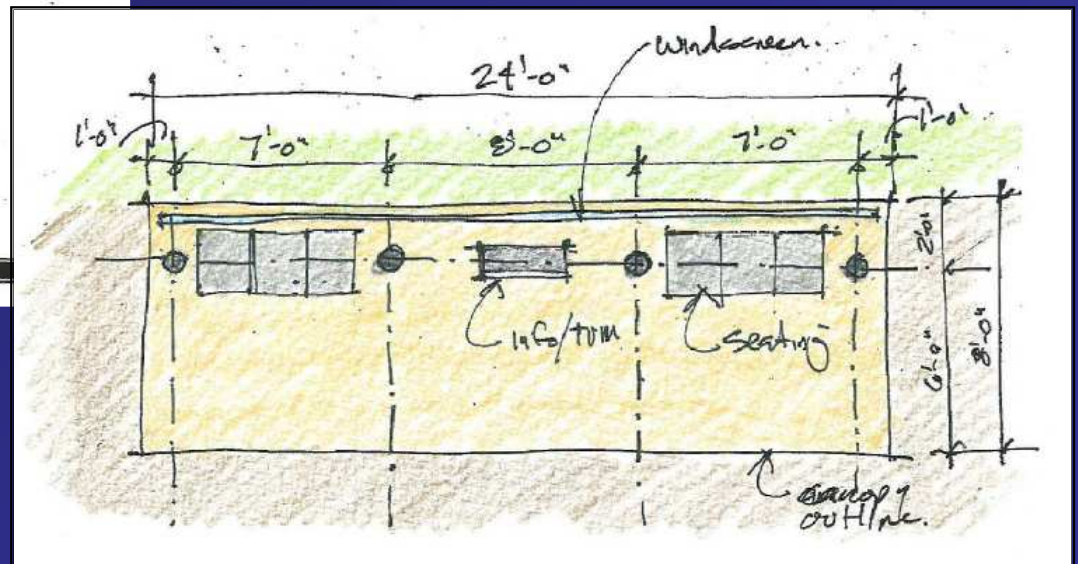
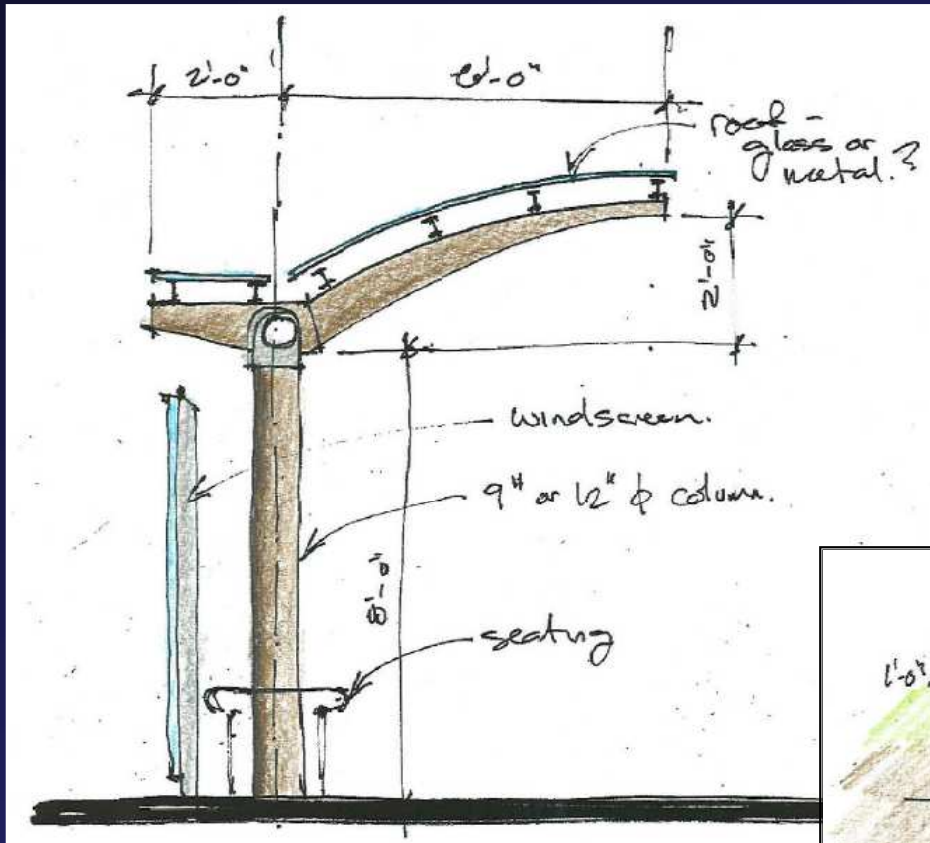
Station Location: 26th/Clark



Architecture Concepts



Architecture: Concept 1



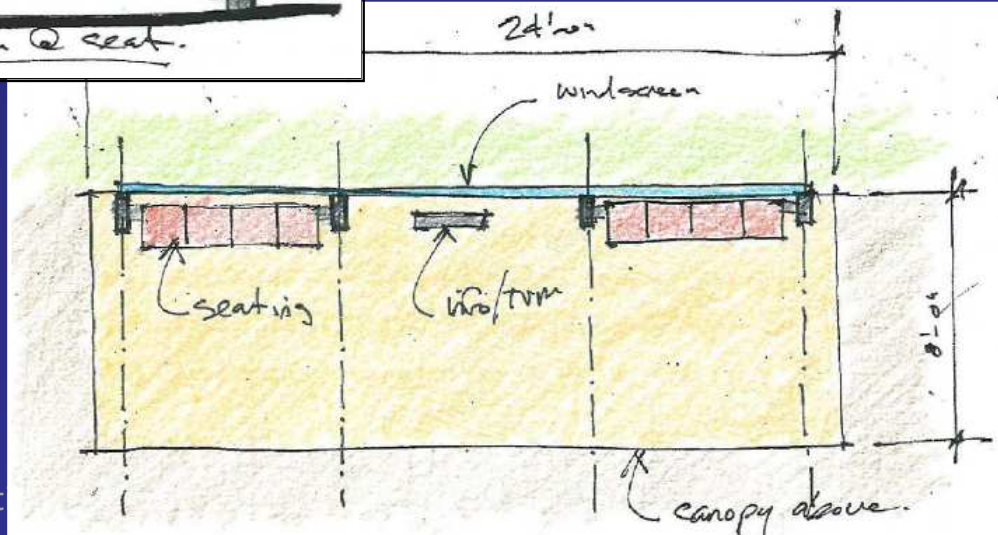
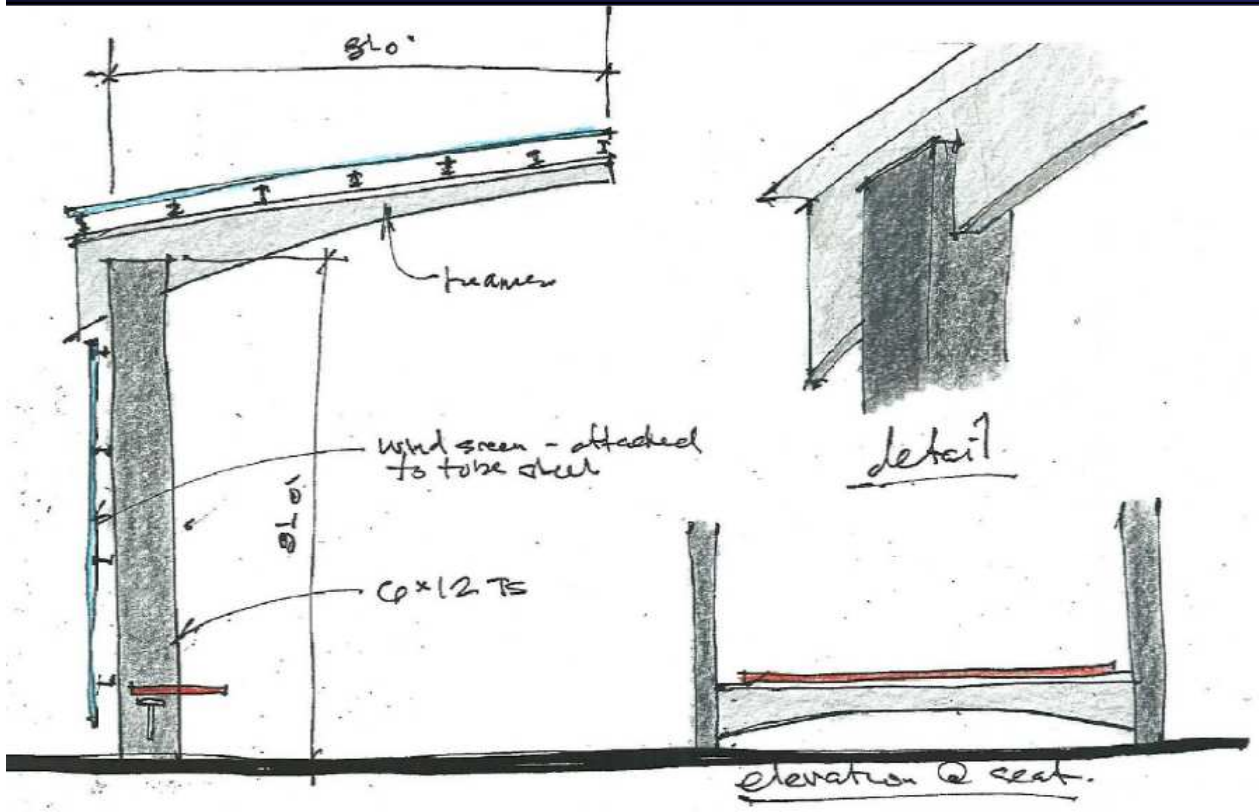
Architecture: Concept 1



Architecture: Concept 1



Architecture: Concept 2



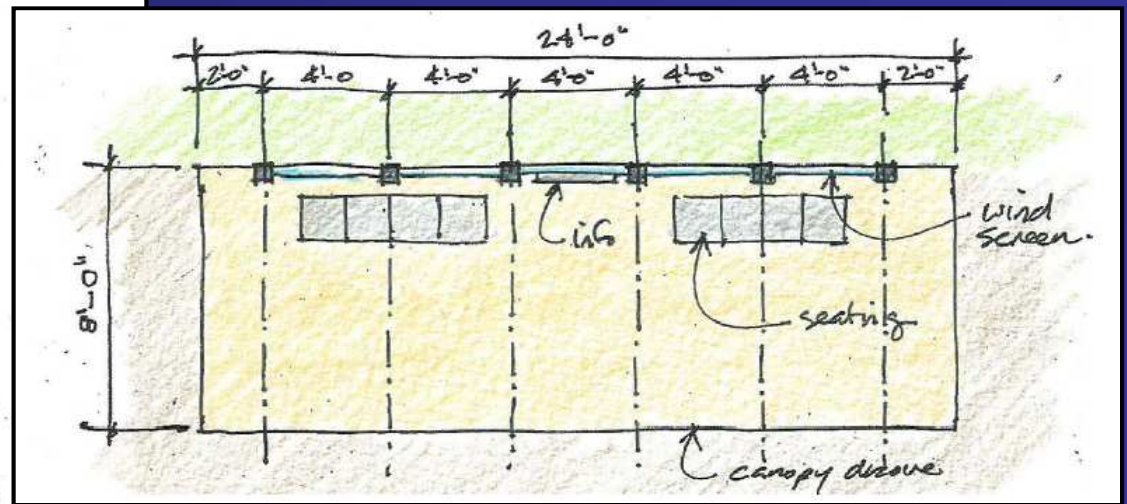
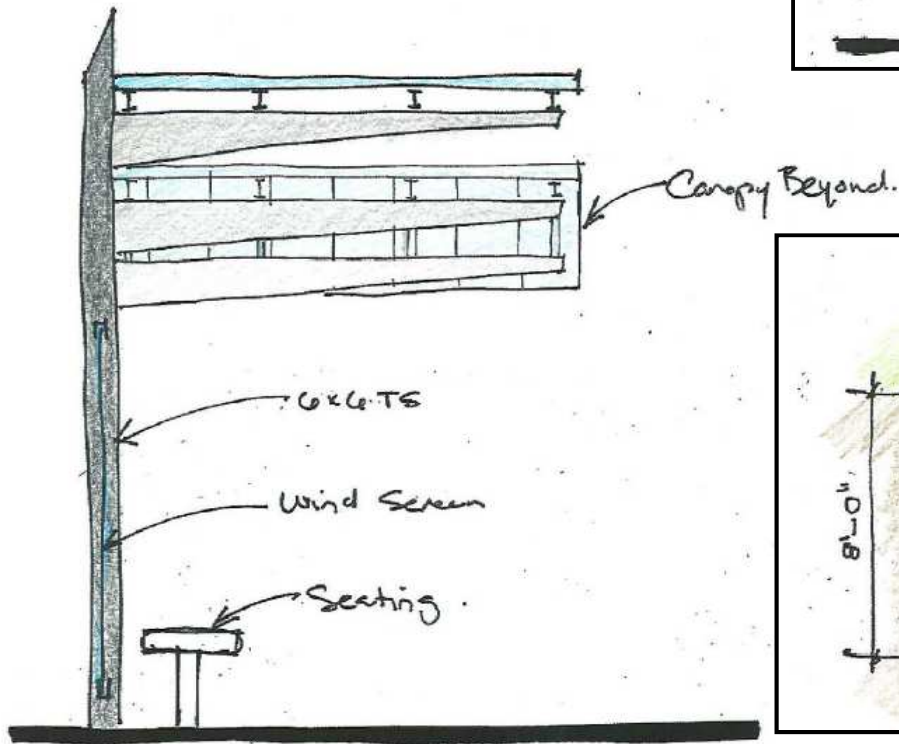
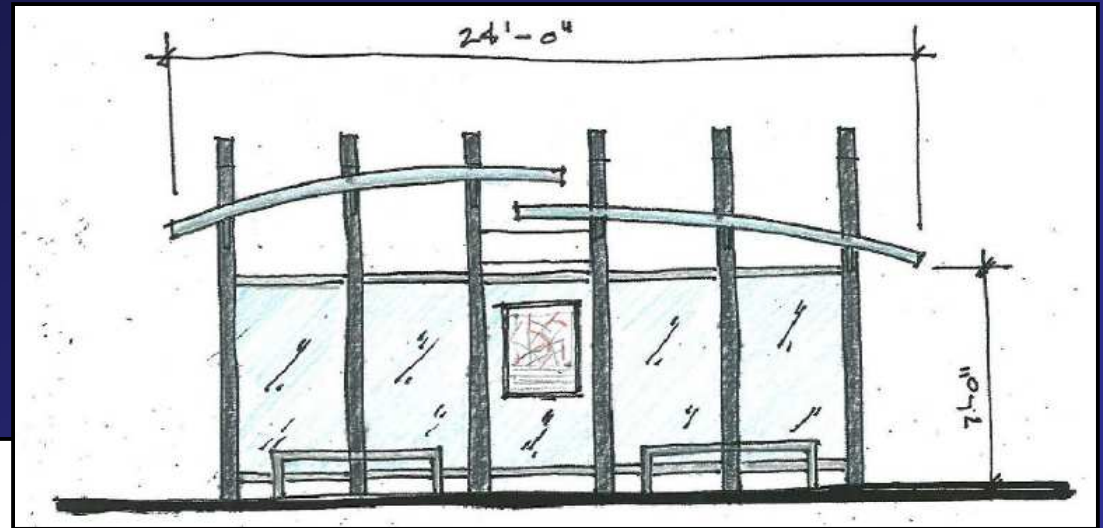
Architecture: Concept 2



Architecture: Concept 2



Architecture: Concept 3



Architecture: Concept 3



Architecture: Concept 3



Architecture Concepts



Architecture Concepts



Comments and Questions?

- Preferred architectural concept
- Materials – pavement, structures
- Colors
- Seating vs. Lean Bars
- Types and placement of information
- Lighting design

Timeline

	Winter 2011	Spring 2011	Summer 2011	Fall 2011	Winter 2012	Spring 2012	Summer 2012	Fall 2012
Preliminary Engineering	█							
Final Design			█					
Contracting				█				
Construction						█		
Community Involvement	*	*		*				

Next Steps

- Public comment through March 31
- Station and running way design
- Procure construction contractor late fall 2011
- Construction during 2012

Keeping Track

- www.ccpytransit.com
- Matthew Huston, P.E.
mhuston@arlingtonva.us